

NEW

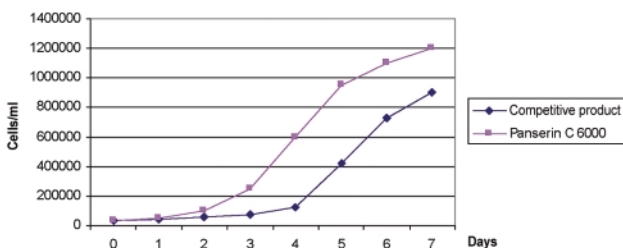
Panserin C 6000

**Protein-free CHO Medium
Suspension Culture**

Cat.-No.: P04-716000

Typical growth curve for CHO in Panserin C 6000

Growth curve CHO



Panserin C 6000 is a protein-free ready-to-use medium for optimum growth of CHO cells (Chinese hamster ovary) and their recombinant derivatives in suspension culture. These cells are often used for the production of recombinant proteins for therapeutic and diagnostic purposes.

SUITABLE FOR:

**spinner cultures, roller bottles,
tissue culture flasks and bioreactors**

VORTEILE:

- **protein-free formulation**
(except for very small quantities of rec. Insulin)
- **with low hydrolysate concentration**
- **free of animal and human components**
- **high cell yields**
- **no cell clumps**
- **ready-to-use medium** (incl. L-glutamine)
- **easy purification of the final products**

**PAN
BIOTECH**

Ask us!



www.pan-biotech.de
**COMPETENCE
IN
CELL CULTURE**

On the backside you
will find the
instructions for use

PANTM
BIOTECH GmbH



Panserin C 6000

Protein-free CHO Medium Suspension Culture

Cat.-No.: P04-716000

INSTRUCTIONS FOR USE:

Adaption to protein-free culture

CHO cells can be transferred directly from a serum-containing adherent culture into a protein-free suspension culture. In this case it takes approx. 2 weeks for a stable suspension culture to develop.

In the first few days there is a lag phase during which time hardly any cell division takes place.

However, after approx. 7 days the cells will have got used to the protein-medium and will have multiplied to 1×10^6 cells/ml.

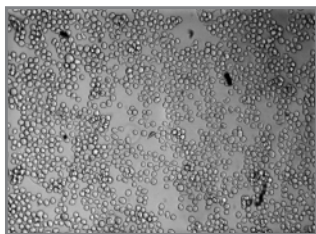
Change the cells to a fresh medium every 3 to 4 days (cultivation: $3 - 5 \times 10^4$ cells/ml).

Generation time CHO in Panserin C 6000: 16.5 hrs

Storage conditions: 2 °C to 8 °C in the dark

Stability: 1 year

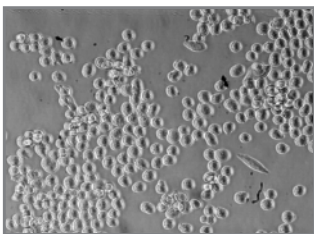
Filling: 500 ml, 1000 ml (larger containers on request)



CHO cells in Panserin C 6000

(T25 culture flask
suspension culture)

100-fold magnification



CHO cells in Panserin C 6000

(T25 culture flask
suspension culture)

200-fold magnification

PAN
BIOTECH

Ask us!

Am Gewerbepark 13
D-94501 Aidenbach
Tel. +49(0)8543/60 16-30
Fax +49 (0)8543/60 16-49
info@pan-biotech.de

www.pan-biotech.de
COMPETENCE
IN
CELL CULTURE

PAN™
BIOTECH GmbH

